

## Instructions for Adjusting AR Minimatic 4/B



Please follow these easy steps to adjust the pressure:

- Step 1: Remove black cap (pos. #46)
- Step 2: Loosen nut (pos. #3) with 10mm wrench.
- Step 3: Turn brass (pos. #4) clockwise until it stops.
- Step 4: Start pump, watch pressure gauge and turn (pos. #2) using 3mm hex clockwise until recommended/rated pressure is obtained. Line pressure will be approximately 200 psi less than actual head pressure. **DO NOT** set line pressure to rated.
- Step 5: Release trigger and make sure there is minimal spike (200-300 psi) (Repeat this step two or three times).
- Step 6: Tighten nut (pos. #3) down against (pos. #4).
- Step 7: Replace black cap (pos. #46)

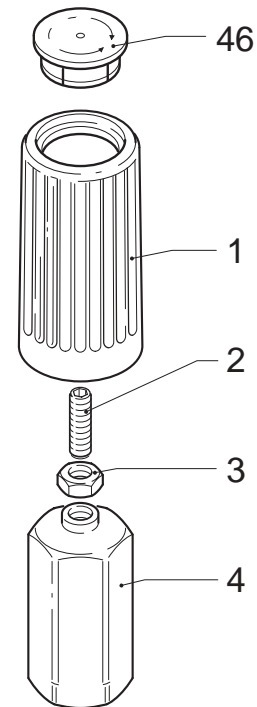
**NOTE:** Now pressure can be decreased by turning black knob counterclockwise, but the pressure cannot be increased to a rating higher than was set.

We recommend this procedure be done by a qualified high pressure pump service technician. Failure to properly adjust can cause serious damage to equipment and body.



AR1540740

Nut holder for adjusting Minimatic Unloader



## Instructions for Adjusting AR Gymatic Unloader Valves

Please follow these easy steps to adjust the pressure:

- Step 1: Remove black cap (pos. #1) from knob.
- Step 2: Loosen bolt (pos. #2) with 6mm hex wrench.
- Step 3: Loosen nut (pos. #3) to top of pos. #2 (bolt).
- Step 4: Turn the black knob (pos. #4) clockwise until it stops.
- Step 5: Start pump, watch pressure gauge and turn pos. #2 (bolt) until recommended/rated pressure is obtained.
- Step 6: Release trigger and make sure there is minimal spike (300-400 psi) (Repeat this step two or three times)
- Step 7: Spin pos. #3 (nut) down. While holder pos. #2 (bolt) in place with hex wrench, use special tool (AR1560590) Or extended 13mm socket wrench to hand tighten Pos. #3 (nut) against pos. #4 (black knob).
- Step 8: Replace pos. #1 (black cap).

**NOTE:** Now pressure can be decreased by turning black knob counterclockwise, but the pressure cannot be increased to a rating higher than what max is set at by technician.



AR1560590

Nut holder for adjusting Gymatic Unloader

