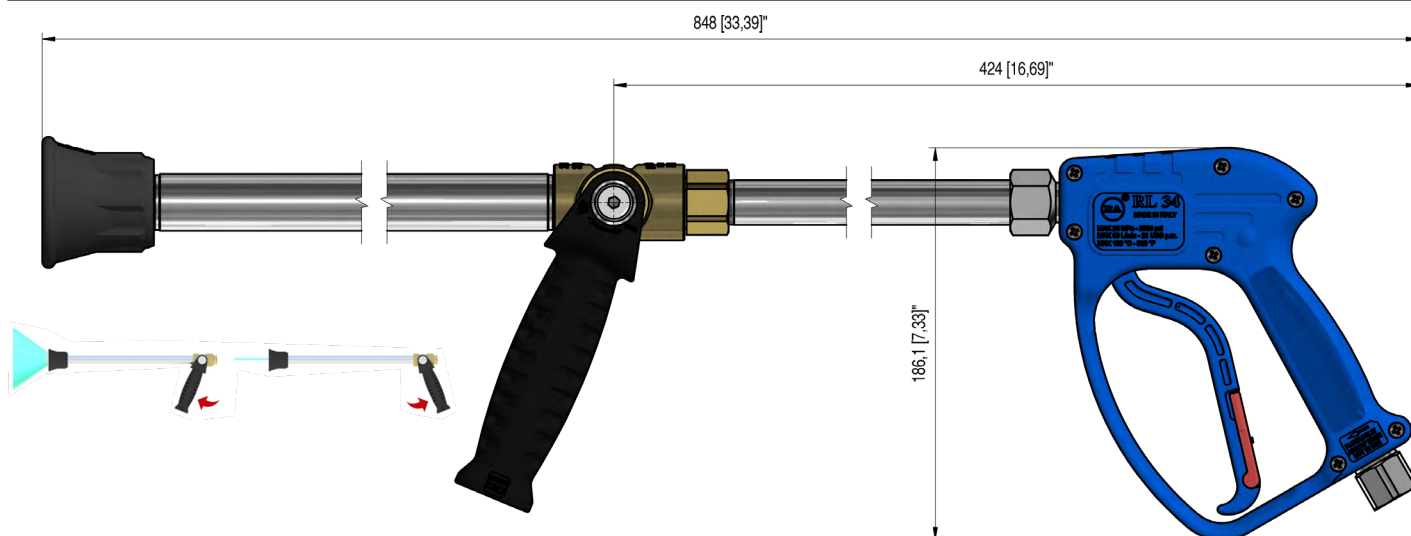


GENERAL PUMP *A member of the Interpump Group***YG26LA34****Washdown Gun/Lance Assembly****FEATURES**

- Shock resistant plastic housing
- Stainless Steel seat and ball
- Internal construction of brass and Stainless Steel
- 34 inch lance
- Ergonomic design
- Minimizes fatigue for the operator

SPECIFICATIONS

Part Number	YG26LA34
Maximum Volume	21.0 GPM
Maximum Discharge Pressure	2,600 PSI
Maximum Fluid Temperature	109° F
Inlet Port Thread	1/2" NPT-F
Orifice Size	#25 (3.0 mm)
Weight	7.0 lbs.
Materials	Stainless Steel, Brass, Plastic, Buna-N, Teflon

DIMENSIONS

General Pump
is a member of
the Interpump Group



Ref 310189 Rev. B
02-23



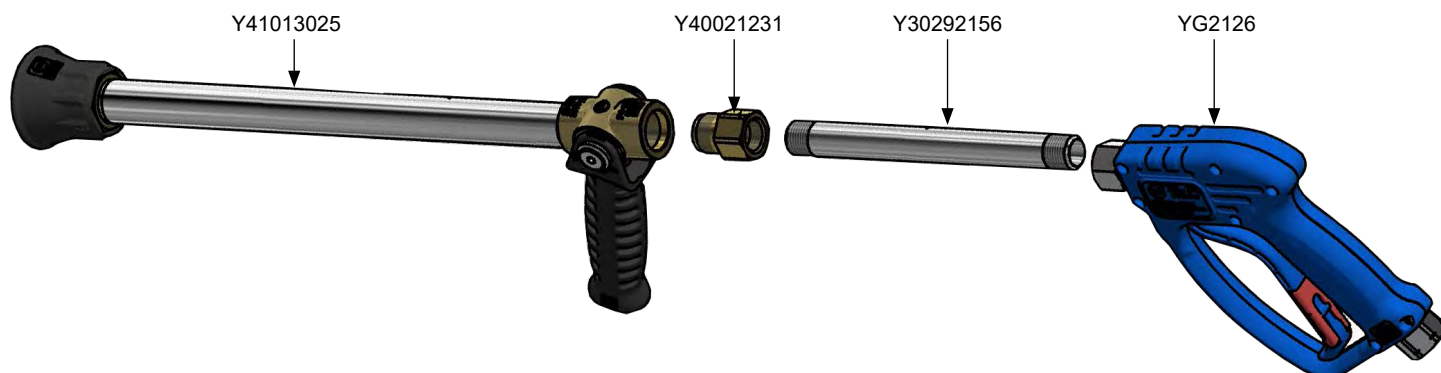
YG26LA34

Washdown Gun/Lance Assembly

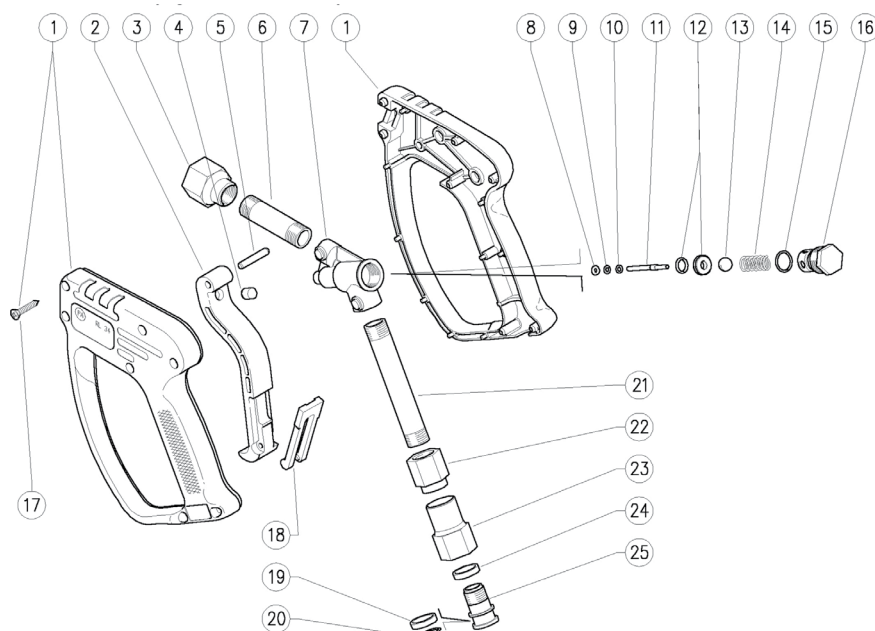
GENERAL PUMP

A member of the Interpump Group

PARTS



PARTS LIST (YG2126)



Item	Part Number	Description	Qty.
1	Y30290224	Casting, RL34, +screws, SST	1
2	Y30254384	Trigger, Blue	1
3	Y30317131	Coupler, M16x1F-1/2F Bsp, Brass	1
4	Y30067584	Stop Pin, 8x7.1 mm	1
5	Y30251731	Parallel Pin, 5x27.5 mm	1
6	Y30318036	Tube, N16x1 mm, Brass	1
7	Y30290135	Housing, Brass	1
8*	Y10401800	Back-up Ring, 3.2 x 5 x 1.2mm	1
9*	Y10316500	O-ring, 2.62 x 2.84mm	1
10	Y14351100	Washer, 3.2x7x0.5 mm, SST	1
11*	Y30280251	SST Plunger, Ø4 x 3 x .43mm	1
12*	Y30280620	Seat. 9mm, SST + O-ring	1
13*	Y14746100	Ball, 13/32", SST	1
14	Y30410851	Spring, 1.6x8.8x24 mm	1

Item	Part Number	Description	Qty.
15*†	Y10306010	O-ring, 1.78 x 12.42 mm	1
16	Y30280331	Spring Plug, M18, Brass	1
17	Y16307551	Screw, 3.5x18 mm, SST	7
18	Y30151084	Safety Latch, Red	1
19*†	Y26107585	Bushing, Open, 15.5 x 19 x 4 mm	1
20*†	Y10309210	O-ring, 2 x 15 mm	1
21	Y30317336	Tube, M6x1 mm, Brass	1
22	Y30318131	Coupling, M15x16, Brass	1
23†	Y30318531	Coupling, 1/2" NPT-F	1
24*†	Y26107485	Bushing, 15.5 x 19 x 4 mm	1
25†	Y26107231	Pin, M15x1-19 mm	1
*	YKITG2126	Gun Repair Kit	
†	YKITSW2126	Swivel Repair Kit	

YG26LA34

Washdown Gun/Lance Assembly

GENERAL PUMP

A member of the Interpump Group

INSTRUCTIONS

This product is to be used with clean, fresh water. For use involving different or corrosive liquids, contact GP's customer service department. Appropriate filtration should be installed when using unclean liquids. Choose the gun that most closely matches the rated pressure, max flow and max temperature of the pressure wash system. In any case, the pressure of the machine should not exceed the permissible pressure rate imprinted on the gun.

INSTALLATION

This gun was designed to operate with hot water (in compliance with the technical specs), making sure not to exceed the max temperature. Always fit a safety valve to protect the system when the latter is under pressure. If the nozzle wears out, the pressure falls. When you install a new nozzle, adjust the system back to the original pressure.

OPERATION

The gun opens and closes at high pressure conduct by means of a piston acting on a seat; the return is controlled by a spring which releases the trigger. Attention: during pump activation ALWAYS set the gun with its safety latch connected in order to prevent accidental openings. The handle on the lance controls the flow.

SAFETY PROCEDURE & WARNINGS



WARNING: High Pressure Systems require a primary pressure regulating device (i.e. regulator, unloader) and a secondary pressure relief device (i.e. pop-off valve, relief valve). Failure to install such relief devices properly could result in personal injury or damage to pump or property. GP does not assume any liability or responsibility for the operation of the user's high pressure system.



WARNING: This product can expose you to chemicals including lead, which is known to the state of California to cause cancer and birth defects or other reproductive harm. For more information, go to www.P65Warnings.ca.gov